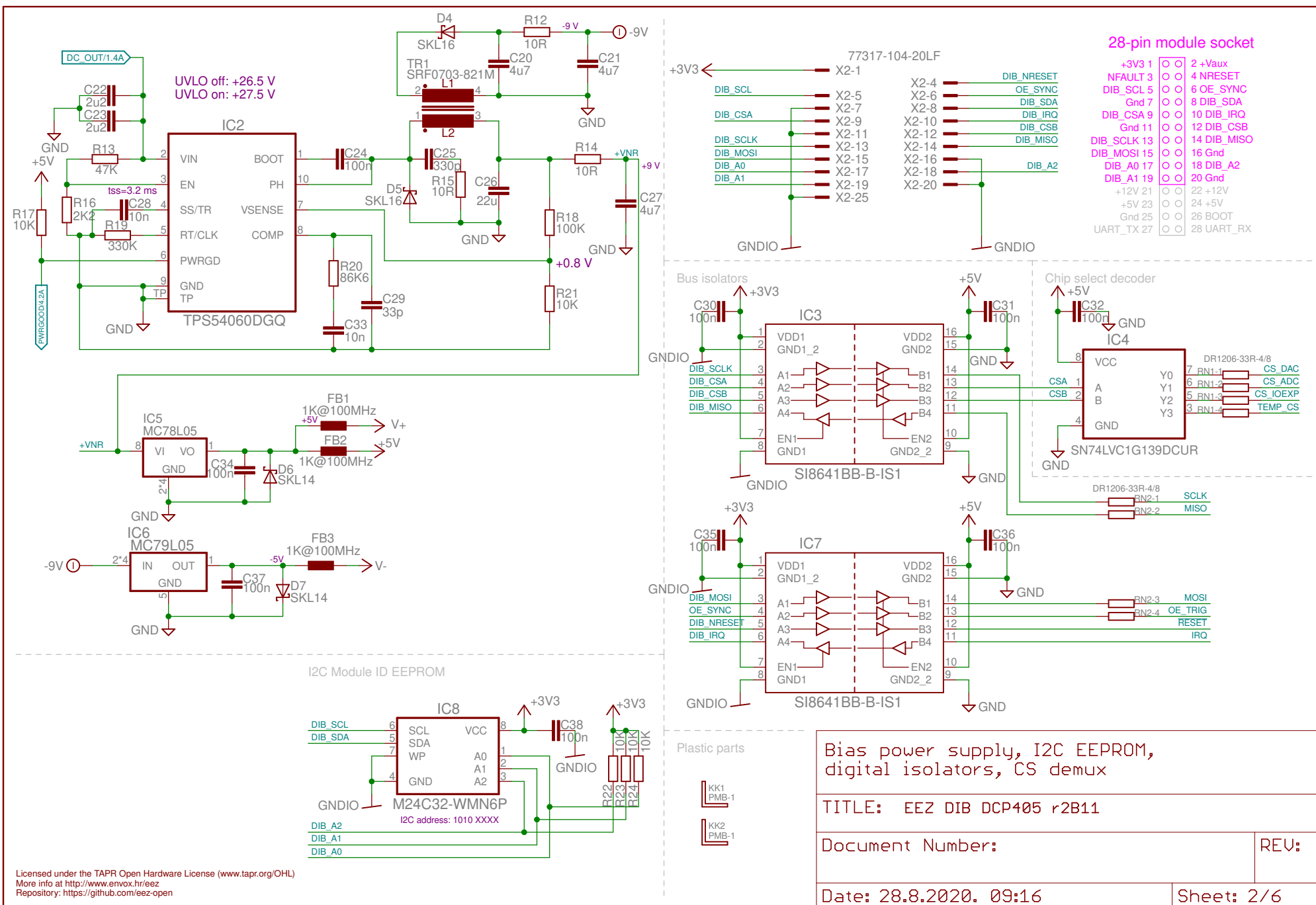
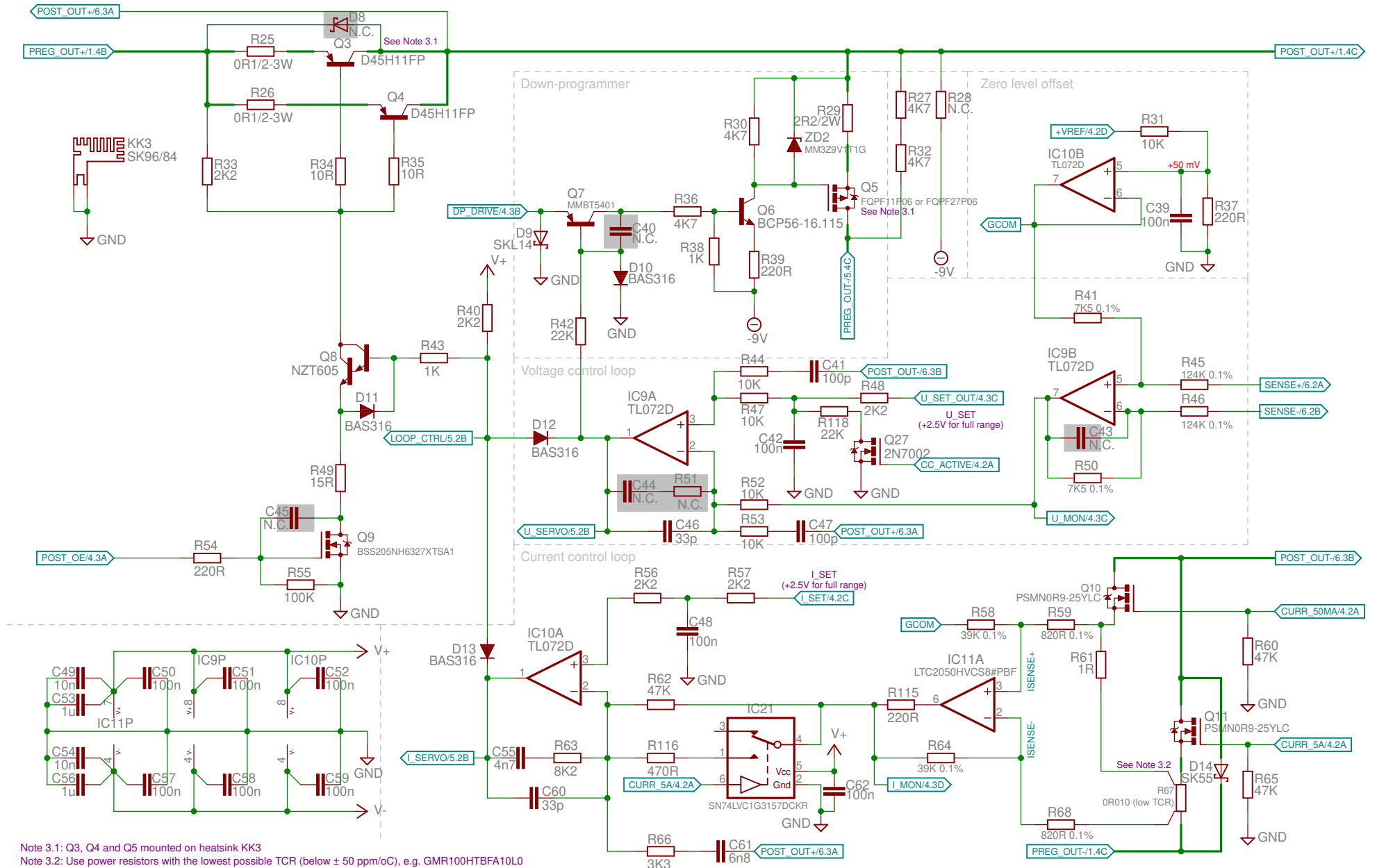


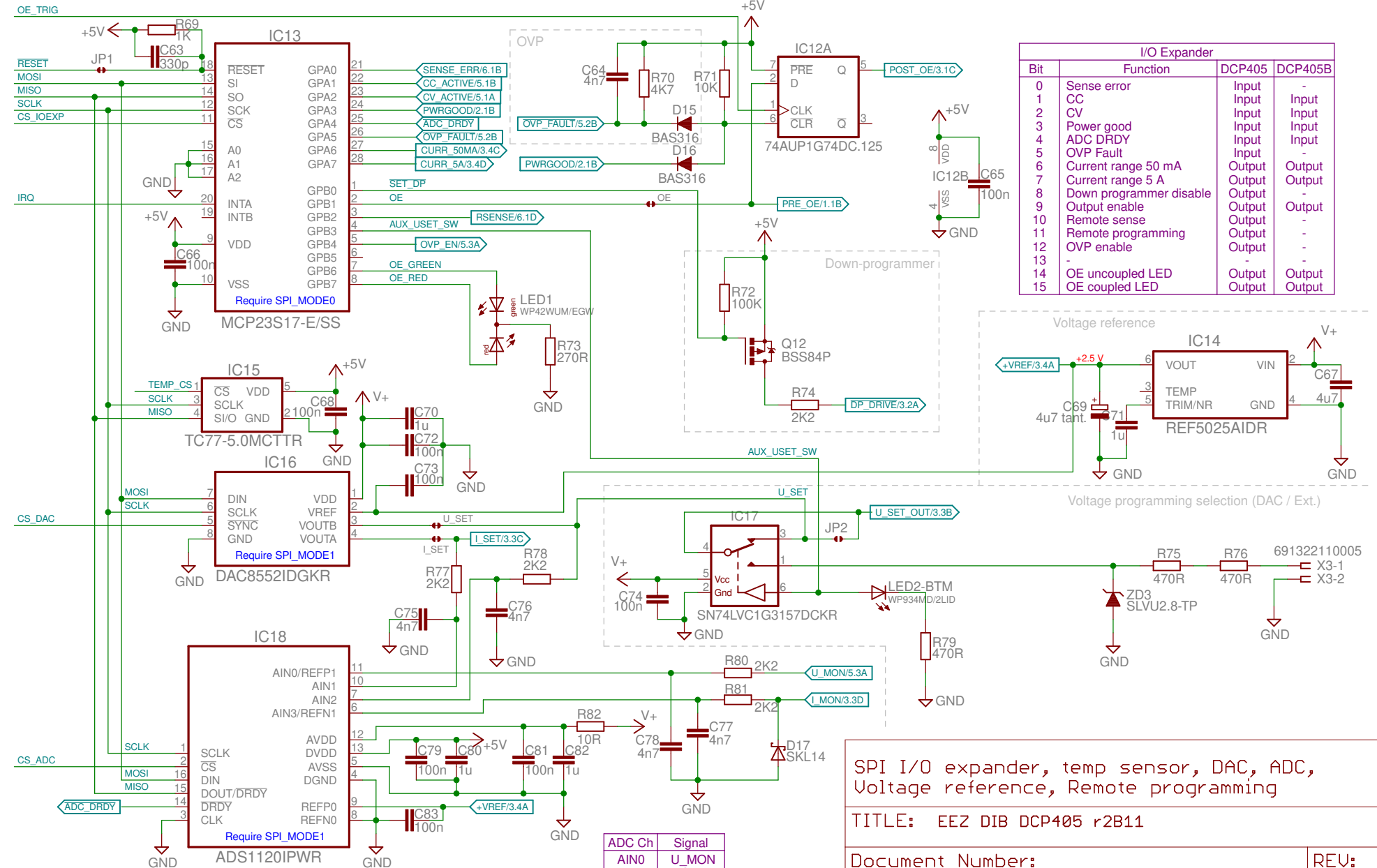


Sheet: 1/6





Digital control (SPI)



SPI I/O expander, temp sensor, DAC, ADC, Voltage reference, Remote programming

TITLE: EEZ DIB DCP405 r2B11

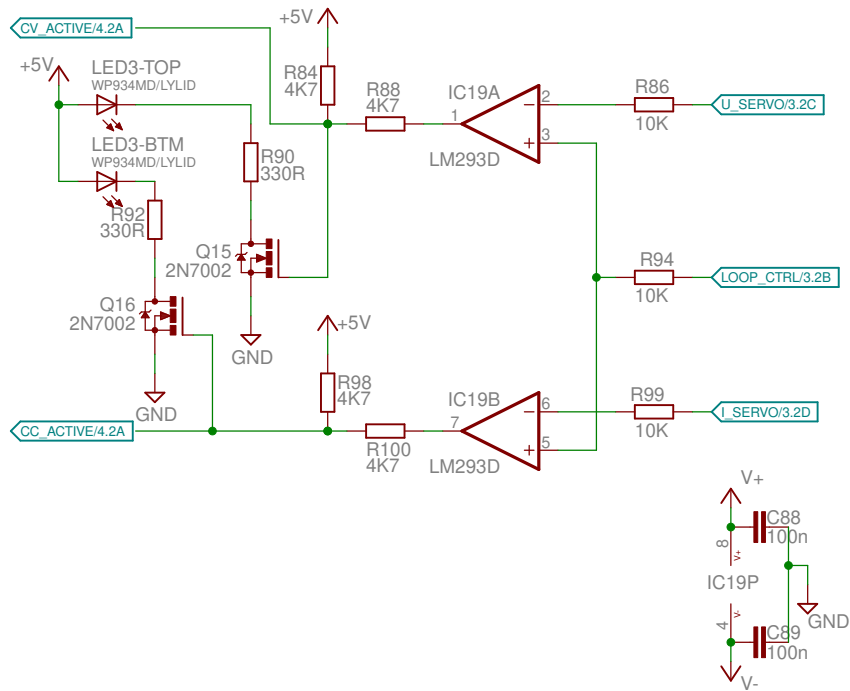
Document Number:

REV:

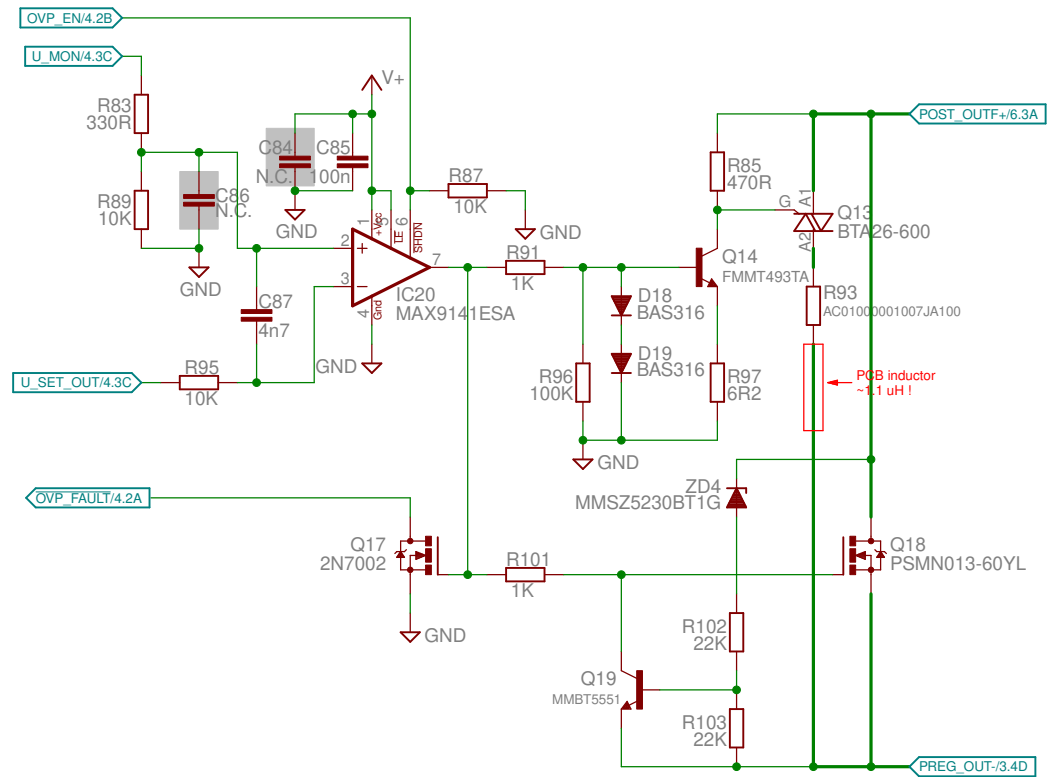
Date: 28.8.2020. 09:16

Sheet: 4/6

Constant Voltage (CV) and Constant Current (CC) mode detection and indication



Over-voltage protection (OVP)



CC/CV mode detection and indication, OVP

TITLE: EEZ DIB DCP405 r2B11

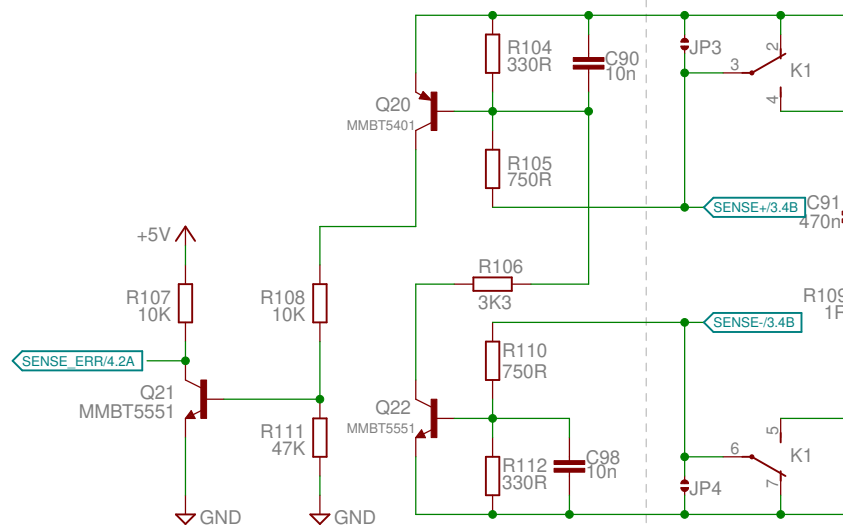
Document Number:

REV:

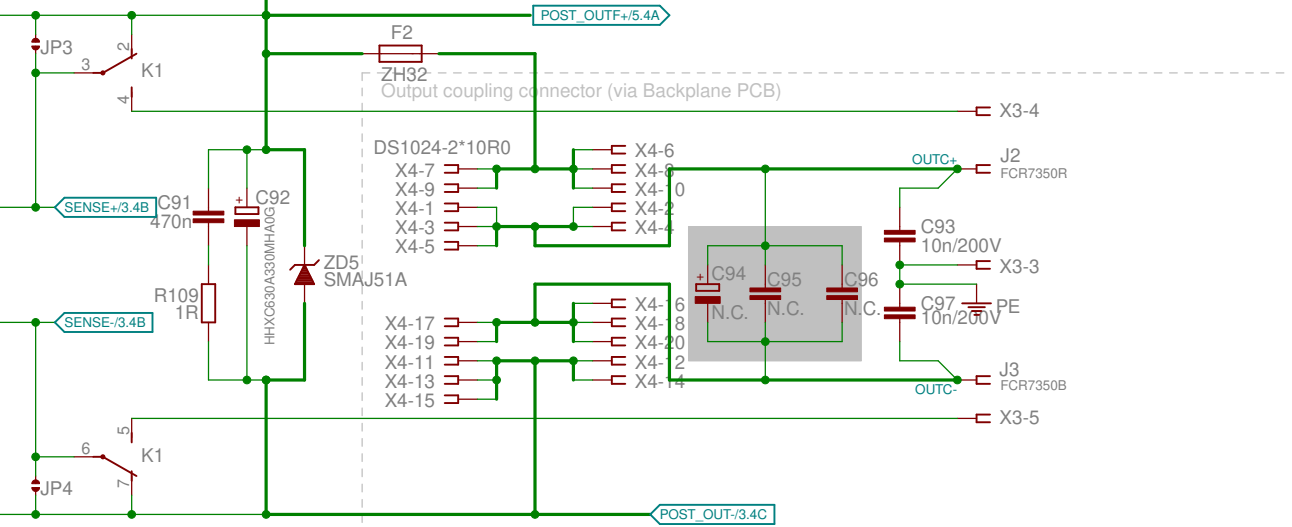
Date: 28.8.2020. 09:16

Sheet: 5/6

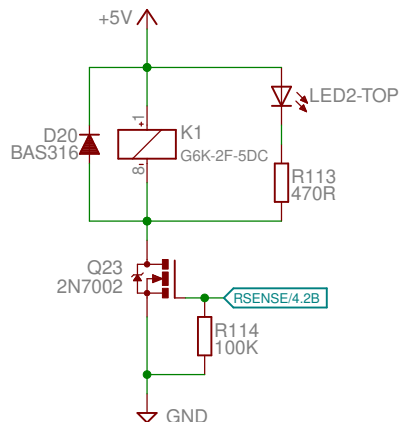
Remote sense reverse polarity detection



Power output section



Remote sense selection



20-pin power socket

OUTC+ 1	2 OUTC+
OUTC+ 3	4 OUTC+
OUTC+ 5	6 POST_OUT+ (fused)
POST_OUT+ (fused) 7	8 POST_OUT+ (fused)
POST_OUT+ (fused) 9	10 POST_OUT+ (fused)
POST_OUT- 11	12 POST_OUT-
POST_OUT- 13	14 POST_OUT-
POST_OUT- 15	16 OUTC-
OUTC- 17	18 OUTC-
OUTC- 19	20 OUTC-

Rsense polarity protection
Output coupling, Rsense relay

TITLE: EEZ DIB DCP405 r2B11

Document Number:

REV:

Date: 28.8.2020. 09:16

Sheet: 6/6